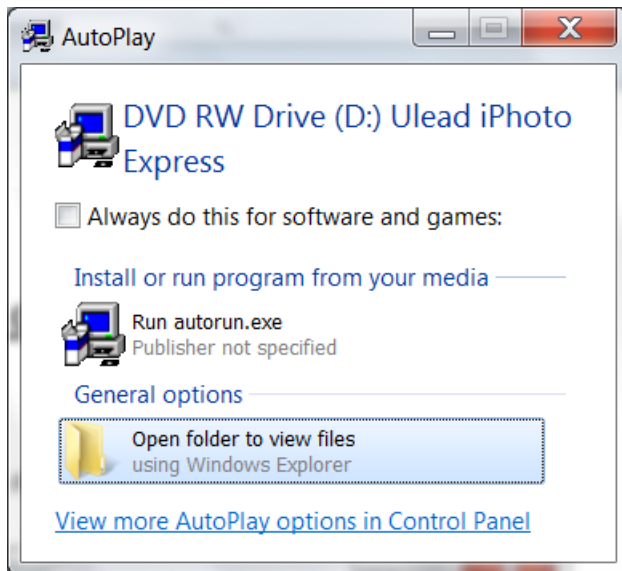
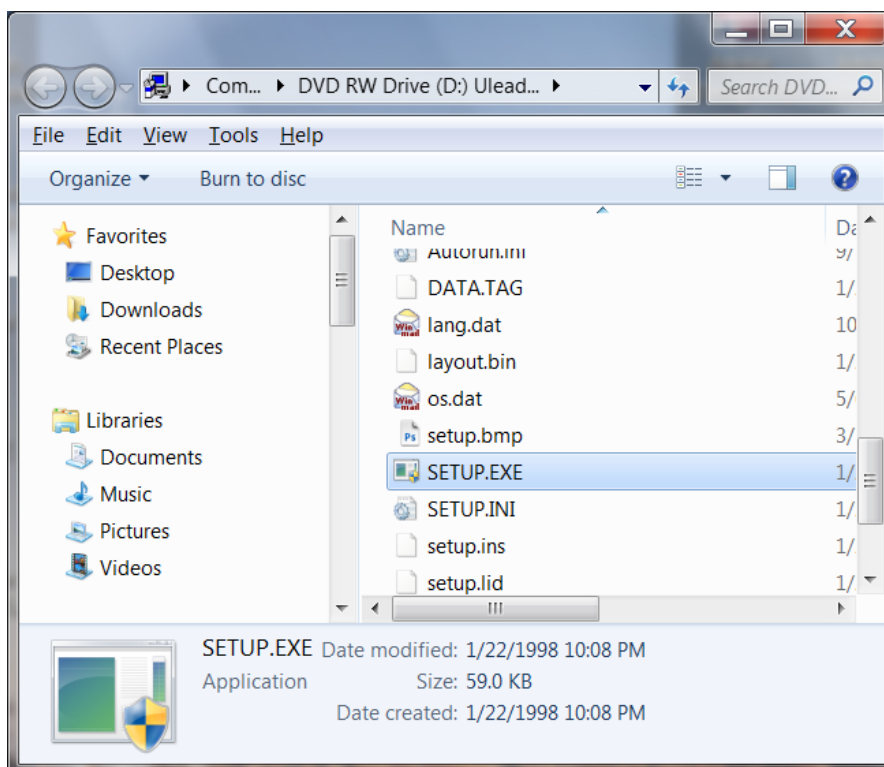


## Installing iPhotoExpress on a 64bit Operating System

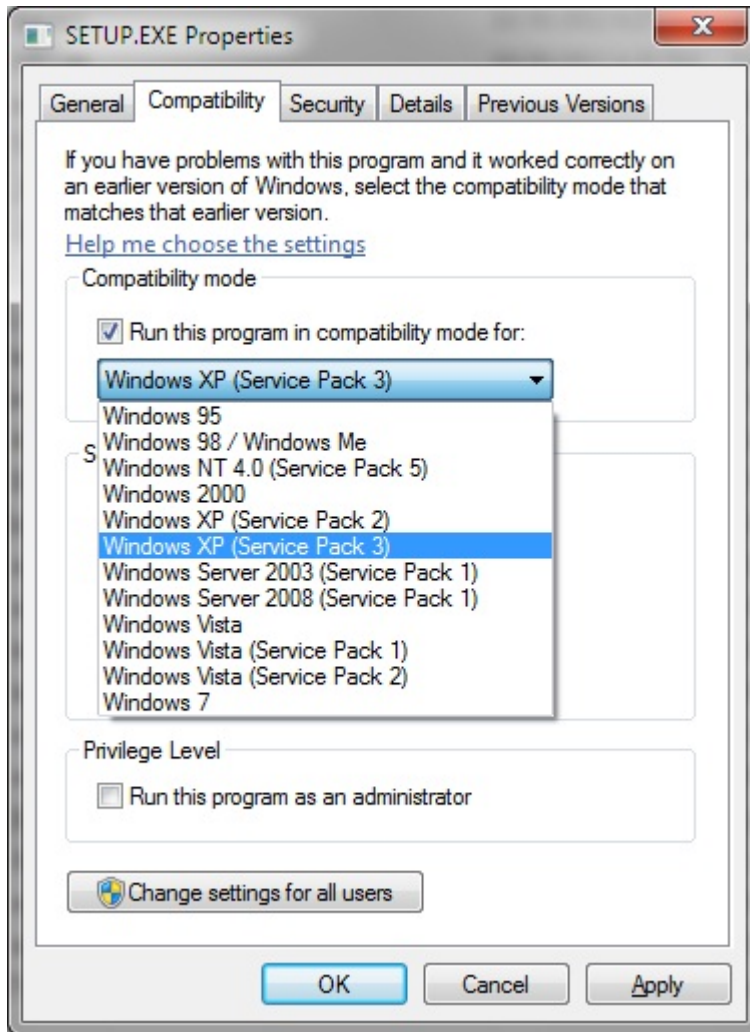
- Put iPhotoExpress CD in CD-ROM Drive
- Click on “Open folder to view files”



- Right click on **Setup.exe** and choose Properties



- Once the Properties window comes up, Choose the “**Compatibility**” tab:
- Checkmark “**Run this program in compatibility mode for:**”
- Pick an Operating System (I.e. Windows XP)
- Hit Apply then OK



Double Click on **Setup.exe** and run installation procedure...

That's it!!...