

# READ ME FIRST!

Reading these brief instructions before attempting to use your compressor will improve your chances of success and reduce potential frustrations!



## KJC-2 Kroma Jet 2 Compressor

\*Warranty Begins from the date of purchase

The compressor has an On/Off push button, AC Adaptor and built-in Holder for Airbrush

### GETTING STARTED & OPERATING INSTRUCTIONS

1. Slip your silicon airbrush hose to the Air Outlet (B) on the compressor and slip the other end on to your airbrush.
2. Connect the power cord to an electrical outlet.
3. Switch on by depressing the Push Button (A) and operate airbrush as desired.
5. Switch off when finished.
6. When your work is finished, be sure to remove all traces of color from your airbrush by flushing with airbrush cleaner (available from Kopykake, item # 91000) or other suitable cleaning agent. Using a Q-Tip or Cotton Swab will help you reach inside the airbrush cup.

### TIPS FOR USING YOUR AIRBRUSH

**To obtain fine lines:** The closer the airbrush is to the surface, the finer the line.

- a) Hold the airbrush almost vertical with the tip approximately 1/2" away from the surface you are airbrushing
- b) Using your Index finger, gently pull back on the airbrush main lever until enough color emerges for the desired size of the line.

**For wide spray patterns:** The further the airbrush is away from the surface, the wider the spray.

- a) As you move the airbrush away from the surface, gently pull back on the airbrush main lever to increase the flow of color.

Experimenting on a paper towel for a few minutes before working on your intended surface is highly recommended.

The Kroma Jet compressor is gentle enough for close up use and powerful enough for wider spraying patterns.

Only use colors designed for airbrushing. Do not use liquid paste colors or concentrated colors even when thinned with water as these contain fibres and pigments that do not dissolve completely and can clog your airbrush; causing it to splatter.

### FOR BEST RESULTS

- Read these instructions above BEFORE using the compressor.
- Ensure your air hose connections have a tight seal to prevent any air leakage which will reduce the effectiveness of your compressor.

### Specifications

Size: 5.5" x 4.75" x 2.25"  
Max Pressure: 12-14 psi  
Compressor: Rotary Reciprocating type  
Electrical: Input: 100/240v 50/60hz 0.6 Amp Max Switching Adaptor  
Output: 12 VDC 200 MA  
Weight: 1.61lb (0.425kg)

## Kroma Jet 2 Compressor Model KJC-2

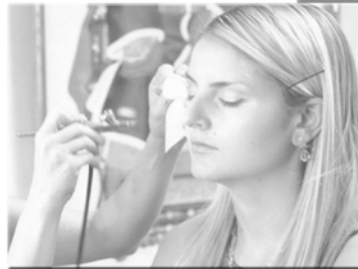


- A - On/Off Push Button
- B - Air Outlet Hose Connection
- C - Airbrush holder

Model pictured  
KRJSET-2 complete  
with Airbrush (AB018),  
6 Ft Hose and  
AC Adaptor

### Used for:

**Cake Decorating  
Airbrush Make-Up  
Airbrush Tattoos**



### WARRANTY & RETURN POLICY

ALL KOPYKAKE PRODUCTS ARE TESTED BEFORE SHIPMENT AND THIS PRODUCT IS GUARANTEED AGAINST ANY DEFECT IN MATERIAL OR WORKMANSHIP FOR A PERIOD OF:

- 1 YEAR FOR COMPRESSORS
- 2 YEAR FOR TURNTABLES
- 5 YEARS FOR PROJECTORS
- AIRBRUSHES CARRY NO WARRANTY

ANY PART OF THIS PRODUCT TO BE DEFECTIVE UNDER NORMAL USE DURING THE WARRANTY PERIOD WILL BE REPAIRED OR REPLACED BY KOPYKAKE AT ITS OPTION. KOPYKAKE ASSUMES NO RESPONSIBILITY FOR DAMAGED DUE TO NEGLIGENCE BY THE USER.

### RETURNING YOUR PRODUCT

ANY EQUIPMENT BEING RETURNED MUST HAVE A RETURN AUTHORIZATION NUMBER (RA#) OBTAINED FROM KOPYKAKE. A PRODUCT WITHOUT AN RA# WILL BE SUBJECT TO A DELAY IN PROCESSING.

1. CONTACT KOPYKAKE FOR A RETURN AUTHORIZATION NUMBER
2. PACKAGE YOUR PRODUCT WELL TO AVOID DAMAGE IN TRANSIT. ANY DAMAGE WILL BE ASSUMED TO HAVE OCCURRED PRIOR TO SHIPPING  
SO PLEASE BE SURE TO PROTECT THE PRODUCT WELL
3. INCLUDE PROOF OF PURCHASE AND A NOTE EXPLAINING THE REASON FOR THE RETURN
4. MARK THE RA# ON THE NOTE AND THE EXTERIOR OF THE PACKAGE SO IT CAN BE EASILY IDENTIFIED
5. RETURN THE PRODUCT VIA UPS OR ANY OTHER CARRIERR COMPANY

IN THE U.S.A. - IF KOPYKAKE FINDS THAT A PRODUCT WAS DEFECTIVE, THEN EQUIPMENT REPLACED OR REPAIRED UNDER WARRANTY WILL RETURNED TO CUSTOMER, FREIGHT OR POSTAGE PAID BY KOPYKAKE

OUTSIDE OF THE U.S.A. - KOPYKAKE WILL REPLACE DEFECTIVE PARTS, BUT CUSTOMER WILL BE REPPONIBLE FOR SHIPPING CHARGES

THE WARRANTY PERIOD FOR REPAIRED OR REPLACED PARTS SHALL BE FOR THE DURATION OF THE ORIGINAL WARRANTY.

WE REGRET THAT ANY RETURNS TO STOCK WILL BE SUBJECT TO A 20% RESTOCKING FEE.



MA002-2 0710

3699 West 240th St. Torrance California 90505 USA  
Tel: 310-373-8906 Fax: 310-375-5275  
sales@kopykake.com www.kopykake.com